

# System variant #1

Power Supply and EIA485 transmission - Industry MODBUS RTU Protocol

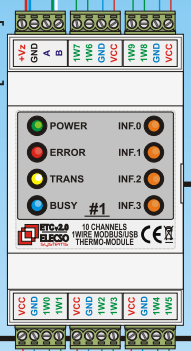
To other ETC/PRC modules →

Power Supply  
9V...30V DC



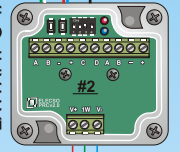
EIA485

**ETC Module Address 1**  
 - 10 measure channels  
 - interfaces: EIA485 / USB  
 - DIN rail mounting  
 - LxWxH: 51x90x65 [mm]



USB

**PRC Module Address 2**  
 - 1 temperature channel  
 - 1 relative humidity channel  
 - interface EIA485  
 - IP68 hermetic cover  
 - LxWxH: 64x58x32 [mm]

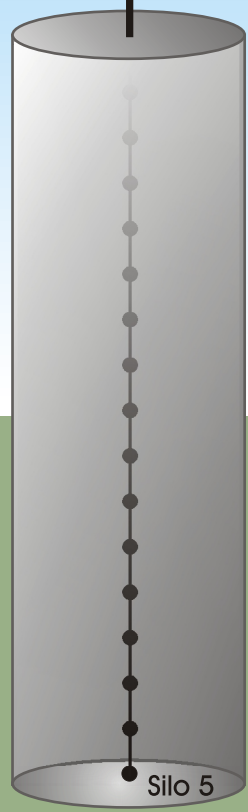
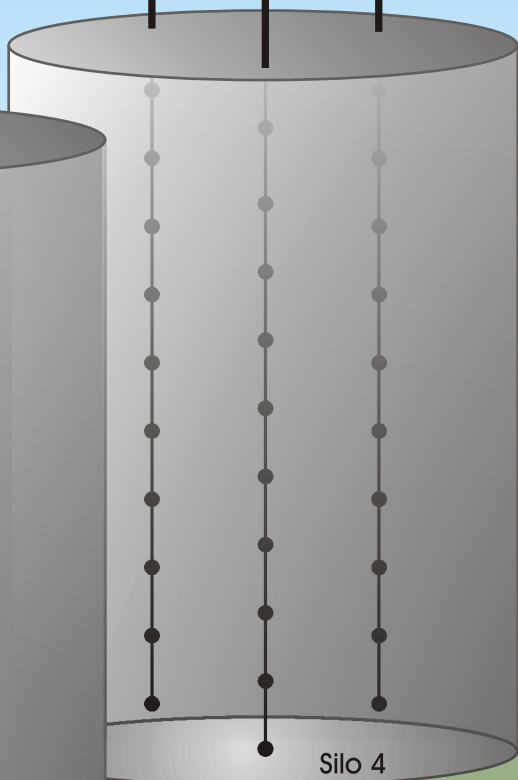
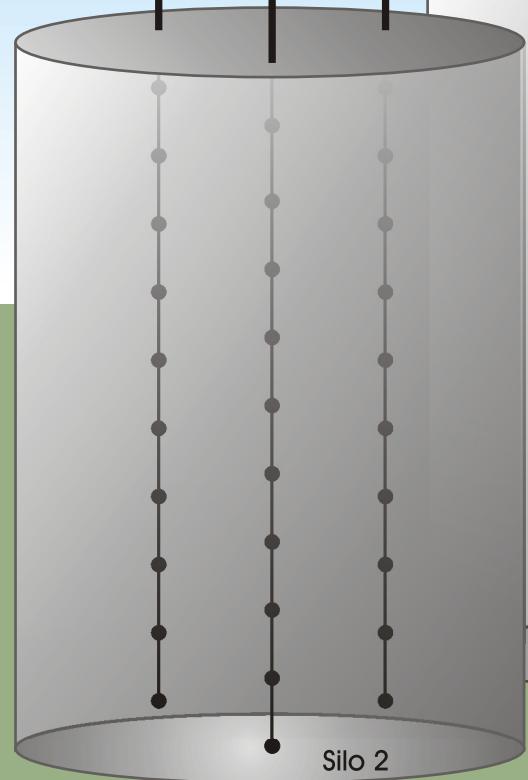
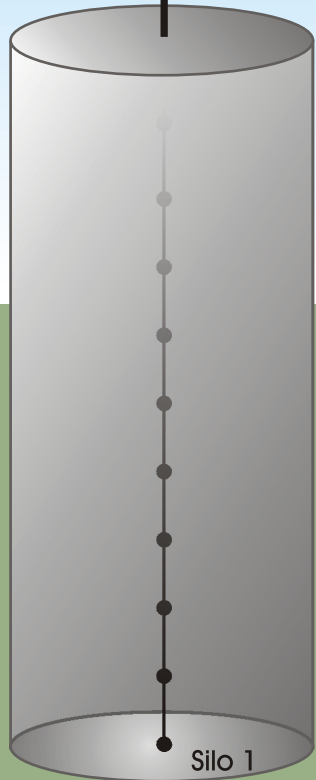


Air H[%], T[°C]

Direct to PC or PLC / SCADA system

Possible connections:

- USB
- EIA485

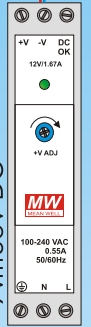


# System variant #2

Power Supply and EIA485 transmission - Industry MODBUS RTU Protocol

To other ETC/PRC modules →

Power Supply  
9V...30V DC



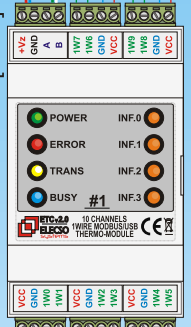
### TRM Module

- EIA485 MODBUS RTU Master
- Data acquisition/storage
- colour graphic display
- DIN rail mounting
- LxWxH: 67x107x65 [mm]



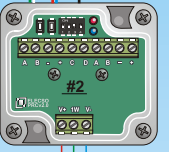
### ETC Module Address 1

- 10 measure channels
- interfaces: EIA485 / USB
- DIN rail mounting
- LxWxH: 51x90x65 [mm]



### PRC Module Address 2

- 1 temperature channel
- 1 relative humidity channel
- interface EIA485
- IP68 hermetic cover
- LxWxH: 64x58x32 [mm]



Air H[%], T[°C]

Direct to PC or PLC / SCADA system

- Possible connections:
- USB
  - RS232C
  - BlueTooth (up to 1200m)

